



*Up-to-date Questions and Answers from authentic resources to improve knowledge and pass the exam at very first attempt. ----- Guaranteed.*



NS0-520 Dumps  
NS0-520 Braindumps  
NS0-520 Real Questions  
NS0-520 Practice Test  
NS0-520 Actual Questions



**Network-Appliance**

**NS0-520**

*NetApp Certified Implementation Engineer SAN, ONTAP*



<https://killexams.com/pass4sure/exam-detail/NS0-520>

Question: 120

You have an SVM serving LUNs to your VMware environment. You have configured the SAN LIFs, zoning, and multipath by using industry best practices. You need to temporarily migrate a SAN LIF to another host, preserving the SAN LIF’s WWPN. You do not want to lose access to the LUNs during LIF migration.

In this scenario, what are three required steps that are needed to accomplish this task? (Choose three.)

- A . Set the new home node and home port in the LI
- C . Take the LIF offline.
- D . Bring the LIF online.
- E . Update the zone using the WWPN of the destination host’s physical port.
- F . Nondisruptively migrate the LIF to the destination host.

Answer: ABC

Question: 121

An administrator is planning to rehost a SAN volume from one SVM to another SVM on a FAS8300 with all hard disk drives.

After rehosting the volume, what are two policies that must be reconfigured? (Choose two.)

- A . export policy
- B . caching policy
- C . volume efficiency policy
- D . snapshot policy

Answer: CD

Question: 122

Click the Exhibit button.



A customer has a 4-node AFF A700 cluster that uses ONTAP 9.7. The customer’s environment has the Emulex

LP31004-M6 and Emulex LPe32002-M2 HBAs.

Referring to the exhibit, using the NVMe protocol, which two host operating systems would be supported? (Choose two.)

- A . SLES 15 64-bit
- B . SLES 12 SP3 64-bit
- C . Microsoft Windows Server 2012 R2
- D . RHEL 7.5 64-bit

**Answer:** AB

**Question:** 123

Click the Exhibit button.

```
switch:admin> fabricshow
```

Switch ID	Worldwide Name	Enet IP Addr	FC IP Addr	Name
1: fffc01	10:00:00:05:1e:02:0e:de	10.246.54.240	0.0.0.0	"sw4"
2: fffc02	10:00:00:05:1e:02:93:75	10.246.54.241	0.0.0.0	"sw10"
4: fffc04	10:00:00:05:1e:44:b6:00	10.246.54.79	10.10.10.10	>"sw6"
5: fffc05	10:00:00:60:69:00:06:56	10.246.54.23	0.0.0.0	"sw5"

The Fabric has 4 switches

Referring to the exhibit, which switch in the fabric is the principal switch?

- A . sw10
- B . sw6
- C . sw4
- D . sw5

**Answer:** B

**Question:** 124

An administrator enabled the iSCSI protocol on an SVM and created a LUN for a VMware ESXi server.

After the administrator performs a rescan, the LUN is not visible on the host.

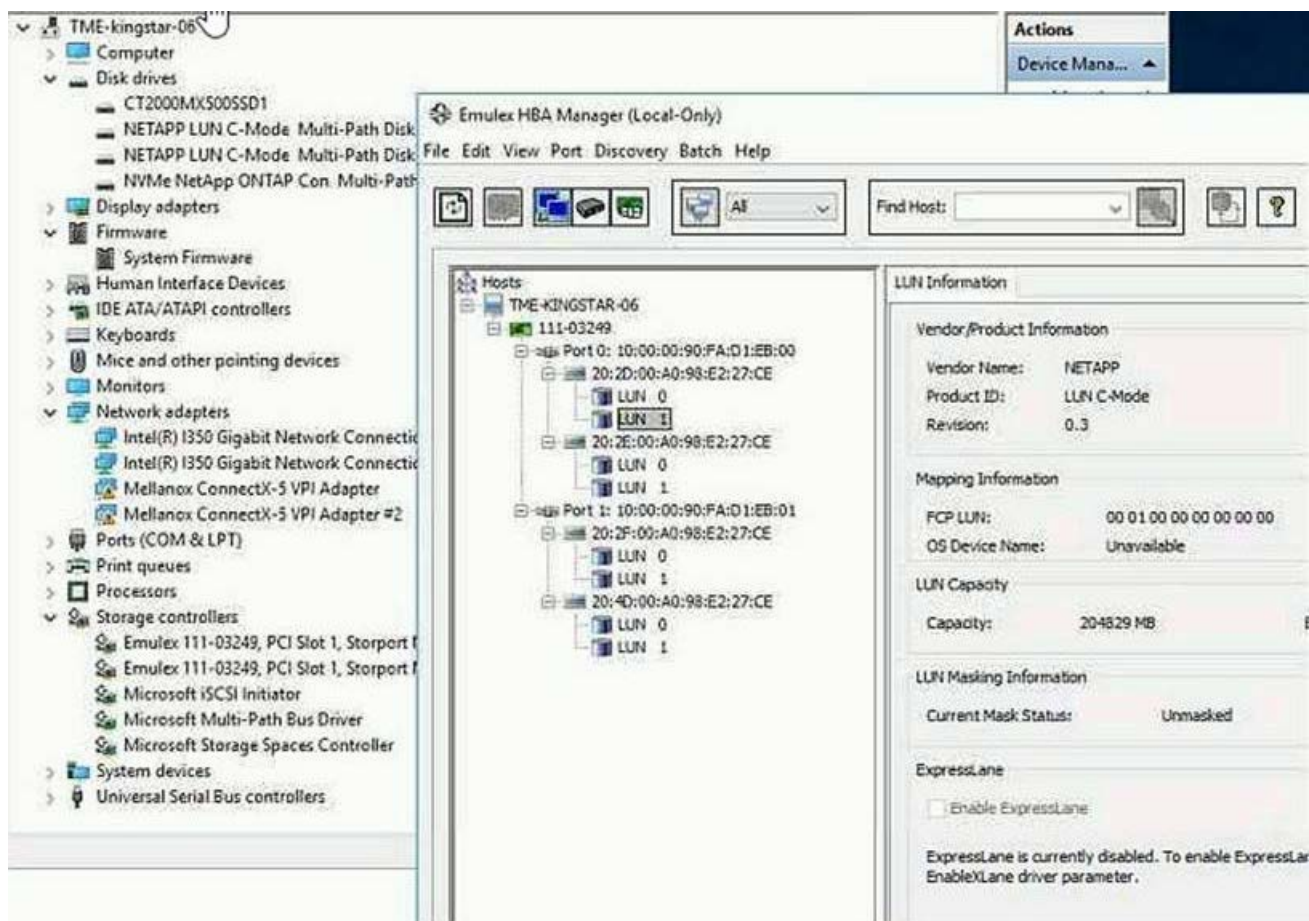
Which statement describes how to solve this problem?

- A . Create an igroup, add the iSCSI IQN, then map the LUN to the igroup.
- B . Enable ALUA support on the VMware host.
- C . Perform a takeover/giveback of the controller that is hosting the LU
- E . Create an igroup, add the WWPN of the host initiator, then map the LUN to the igroup.

**Answer:** A

**Question:** 125

Click the Exhibit button.



Referring to the exhibit, how many LUNs should the server administrator see on the Windows 2016 host?

- A) 0
- B) 4
- C) 2
- D) 8

**Answer:** C

**Question:** 126

Click the Exhibit button.



Ports of Slot 0	0	1	2	3	4	5	6	7	8	9	10	11	12	13	14	15
Octet Speed Combo	1	1	1	1	1	1	1	1	1	1	1	1	1	1	1	1
Speed	AN	AN	AN	AN	AN	AN	AN	AN	AN	AN	AN	AN	AN	AN	AN	AN
AL_PA Offset 13	..	..	..	..	..	..	..	..	..	..	..	..	..	..	..	..
Trunk Port	ON	ON	ON	ON	ON	ON	ON	ON	ON	ON	ON	ON	ON	ON	ON	ON
Long Distance	..	..	..	..	..	..	..	..	..	..	..	..	..	..	..	..
VC Link Init	..	..	..	..	..	..	..	..	..	..	..	..	..	..	..	..
Locked L_Port	-	-	-	-	-	-	-	-	-	-	-	-	-	-	-	-
Locked G_Port	..	..	..	..	..	..	..	..	..	..	..	..	..	..	..	..
Disabled E_Port	..	..	..	..	..	..	..	..	..	..	..	..	..	..	..	..
Locked E_Port	..	..	..	..	..	..	..	..	..	..	..	..	..	..	..	..
ISL R_RDY Mode	..	..	..	..	..	..	..	..	..	..	..	..	..	..	..	..
RSCN Suppressed	..	..	..	..	..	..	..	..	..	..	..	..	..	..	..	..
Persistent Disable	..	..	..	..	..	..	..	..	..	..	..	..	..	..	..	..
LOS TOV mode	0	0	0	0	0	0	0	0	0	0	0	0	0	0	0	0
NPIV capability	OFF	OFF	OFF	OFF	OFF	OFF	OFF	OFF	OFF	OFF	OFF	OFF	OFF	OFF	OFF	OFF
NPIV PP Limit	126	126	126	126	126	126	126	126	126	126	126	126	126	126	126	126
NPIV FLOGI Logout	..	..	..	..	..	..	..	..	..	..	..	..	..	..	..	..
QOS Port	AE	AE	AE	AE	AE	AE	AE	AE	AE	AE	AE	AE	AE	AE	AE	AE
EX Port	..	..	..	..	..	..	..	..	..	..	..	..	..	..	..	..
Mirror Port	..	..	..	..	..	..	..	..	..	..	..	..	..	..	..	..
Credit Recovery	ON	ON	ON	ON	ON	ON	ON	ON	ON	ON	ON	ON	ON	ON	ON	ON
Fport Buffers	..	..	..	..	..	..	..	..	..	..	..	..	..	..	..	..
Fport Credits	..	..	..	..	..	..	..	..	..	..	..	..	..	..	..	..
Port Auto Disable	..	..	..	..	..	..	..	..	..	..	..	..	..	..	..	..
CSCTL mode	..	..	..	..	..	..	..	..	..	..	..	..	..	..	..	..
D-Port mode	..	..	..	..	..	..	..	..	..	..	..	..	..	..	..	..
D-Port over DWDM	..	..	..	..	..	..	..	..	..	..	..	..	..	..	..	..
Compression	..	..	..	..	..	..	..	..	..	..	..	..	..	..	..	..
Encryption	..	..	..	..	..	..	..	..	..	..	..	..	..	..	..	..
10G/16G FEC	ON	ON	ON	ON	ON	ON	ON	ON	ON	ON	ON	ON	ON	ON	ON	ON
16G FEC via TTS	..	..	..	..	..	..	..	..	..	..	..	..	..	..	..	..
Fault Delay	0	0	0	0	0	0	0	0	0	0	0	0	0	0	0	0
SIM Port	..	..	..	..	..	..	..	..	..	..	..	..	..	..	..	..
TDZ mode	..	..	..	..	..	..	..	..	..	..	..	..	..	..	..	..
Clean Address Bit	..	..	..	..	..	..	..	..	..	..	..	..	..	..	..	..
Flex Port	FC	FC	FC	FC	FC	FC	FC	FC	FC	FC	FC	FC	FC	FC	FC	FC

An administrator enabled the FC protocol on an SVM and created a LUN for a Windows Server 2019 server. After a rescan, the LUN is not visible on the host.

Referring to the exhibit, which two steps must the administrator take to solve this problem? (Choose two.)

- A . Enable NPIV on the switch.
- B . Create an igroup, add the iSCSI IQN, and then map the igroup to the LU
- D . Disable NPIV on the switch.
- E . Create an igroup, add the WWPN of the host initiator, and then map the igroup to the LU

**Answer:** AD

**Question:** 127

You have a 2-node AFF A400 serving FC LUNs. You are asked to make an instant-writable copy of a LUN in a deduplicated volume. The writable copy must not take additional space.

In this scenario, which two ONTAP features would be used? (Choose two.)

- A . clone split
- B . volume clone
- C . LUN move
- D . file clone

**Answer:** BD

**Question: 128**

A storage administrator is setting up a Red Hat Enterprise Linux 8.1 system to use NVMe storage in ONTAP 9.7.

In this scenario, which action is required?

- A. Load the FC HBA drivers.
- B. Set up the Red Hat auto mounter.
- C. Load the Ethernet drivers.
- D. Set up ALUA.

**Answer:** A

**Question: 129**

An administrator suspects abnormal operation and performance-related issues within a particular SAN environment. The administrator wants to further investigate the environment in terms of overall health, best practice recommendations, proactive remediation, and risk assessments, as compared to other SAN deployments.

Which tool should the administrator use to assess this information?

- A . Active IQ
- B . Active IQ OneCollect
- C . Active IQ Config Advisor
- D . Interoperability Matrix Tool (IMT)

**Answer:** C

**Question: 130**

You are asked to increase the size of your existing 4-node FAS8060 cluster running ONTAP 9.7 software with four additional AFF A700 nodes.

Which tool enables you to confirm that this will be a valid addition?

- A . Active IQ OneCollect
- B . Hardware Universe (HWU)
- C . Active IQ Config Advisor
- D . Active IQ

**Answer:** B

**Question: 131**

You are called to help with a new customer's SAN environment that consists of an 8-node AFF A700 cluster, Cisco

MDS fabric switches, and Cisco UCS servers.

Which two tools would help you to assess the environment? (Choose two.)

- A . Active IQ OneCollect
- B . Active IQ Upgrade Advisor
- C . NetApp ONTAP Mediator
- D . Brocade SAN Health

**Answer:** AB

**Question:** 132

A database owner requests that two additional hosts be added to an application server cluster. This brings the host count for the fabric to 10. The company's internal procedure is to set SAN hosts with a queue depth of 256. The FAS8300 2-node cluster is configured with one HBA per node with one port connected to fabric A and one port connected to fabric B. Users complain about inconsistent performance.

What must the storage administrator do to ensure continuous operation of the hosts in this new configuration?

- A . Add two more hosts to the application server cluster.
- B . Reduce the number of LIFs per node on the FAS8300 cluster.
- C . Create two additional LIFs per node on the FAS8300 cluster.
- D . Reduce the queue depth of the hosts such that the total does not exceed 2048.

**Answer:** D

**Question:** 133

You have a new 2-node AFF All SAN Array A700 cluster serving iSCSI LUNs. You are asked to test failures of the storage back-end subsystem.

In this scenario, which two actions satisfy the failure criteria? (Choose two.)

- A . Disable Snapshot policies.
- B . Pull an Ethernet cable from a Linux host.
- C . Perform a storage controller failover.
- D . Pull an Ethernet cable from a storage port with a cluster LI

**Answer:** CD



# SAMPLE QUESTIONS

*These questions are for demo purpose only. **Full version** is up to date and contains actual questions and answers.*

*Killexams.com is an online platform that offers a wide range of services related to certification exam preparation. The platform provides actual questions, exam dumps, and practice tests to help individuals prepare for various certification exams with confidence. Here are some key features and services offered by Killexams.com:*

**Actual Exam Questions:** *Killexams.com provides actual exam questions that are experienced in test centers. These questions are updated regularly to ensure they are up-to-date and relevant to the latest exam syllabus. By studying these actual questions, candidates can familiarize themselves with the content and format of the real exam.*

**Exam Dumps:** *Killexams.com offers exam dumps in PDF format. These dumps contain a comprehensive collection of questions and answers that cover the exam topics. By using these dumps, candidates can enhance their knowledge and improve their chances of success in the certification exam.*

**Practice Tests:** *Killexams.com provides practice tests through their desktop VCE exam simulator and online test engine. These practice tests simulate the real exam environment and help candidates assess their readiness for the actual exam. The practice tests cover a wide range of questions and enable candidates to identify their strengths and weaknesses.*

**Guaranteed Success:** *Killexams.com offers a success guarantee with their exam dumps. They claim that by using their materials, candidates will pass their exams on the first attempt or they will refund the purchase price. This guarantee provides assurance and confidence to individuals preparing for certification exams.*

**Updated Content:** *Killexams.com regularly updates its question bank and exam dumps to ensure that they are current and reflect the latest changes in the exam syllabus. This helps candidates stay up-to-date with the exam content and increases their chances of success.*

**Technical Support:** *Killexams.com provides free 24x7 technical support to assist candidates with any queries or issues they may encounter while using their services. Their certified experts are available to provide guidance and help candidates throughout their exam preparation journey.*

For More exams visit <https://killexams.com/vendors-exam-list>  
Kill your exam at First Attempt....Guaranteed!