



*Up-to-date Questions and Answers from authentic resources to improve knowledge and pass the exam at very first attempt. ----- Guaranteed.*



*E20-260 Dumps  
E20-260 Braindumps  
E20-260 Real Questions  
E20-260 Practice Test  
E20-260 Actual Questions*



**DELL-EMC**

**E20-260**

*Specialist - Implementation Engineer, VPLEX*



<https://killexams.com/pass4sure/exam-detail/E20-260>

**QUESTION: 200**

Refer to the exhibit.

```
10.126.96.19 - PuTTY
VPLEXcli:/clusters/cluster-1/consistency-groups/DD_CG_2> ll

Attributes:
Name                               Value
-----
active-clusters                     []
cache-mode                         synchronous
detach-rule                        winner cluster-2 after 5s
operational-status                 [(cluster-1,{ summary:: ok, details:: [] }),(cluster-2,{
summary:: ok, details:: [] })]
passive-clusters                   []
recoverpoint-enabled               false
storage-at-clusters                [cluster-1, cluster-2]
virtual-volumes                    [DD_8_3_vol, DD_8_4_vol]
visibility                         [cluster-1, cluster-2]

Contexts:
Name                               Description
-----
advanced                           -
recoverpoint                       -

VPLEXcli:/clusters/cluster-1/consistency-groups/DD_CG_2> drill-down -o DD_8_3_vol
virtual-volume: DD_8_3_vol (cluster-1)
  distributed-device: DD_8_3
    distributed-device-component: DD_7_3 (cluster-1)
      extent: extent Symm0841_03A7_1
        storage-volume: Symm0841_03A7 (blocks: 0 - 1295999)
      distributed-device-component: DD_8_32012Nov26_183659 (cluster-2)
        extent: extent VNX_LUN102_1
          storage-volume: VNX_LUN102 (blocks: 0 - 1295999)

VPLEXcli:/clusters/cluster-1/consistency-groups/DD_CG_2>
```

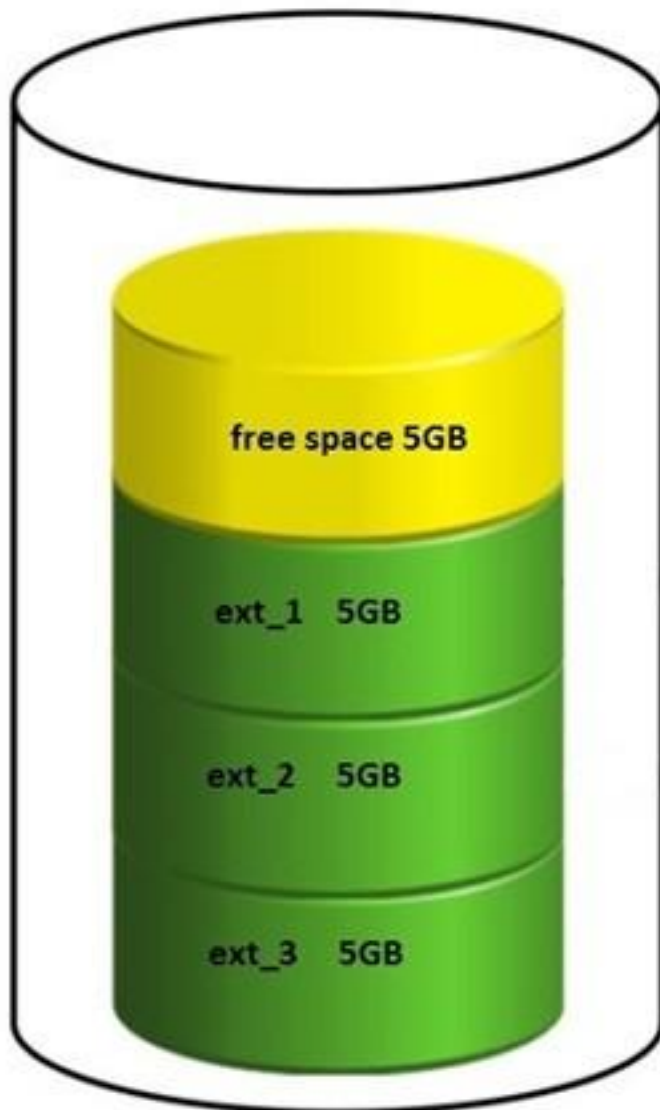
You have created a Distributed Device in a VPLEX Metro system. Which VPLEX Object can be placed in a Storage View for Cluster-1?

- A. DD\_8\_3\_vol
- B. DD\_8\_32012Nov26\_183659
- C. Symm0841\_03A7
- D. extent\_Symm0841\_03A7\_1

**Answer: A**

**QUESTION: 201**

Refer to the exhibit.

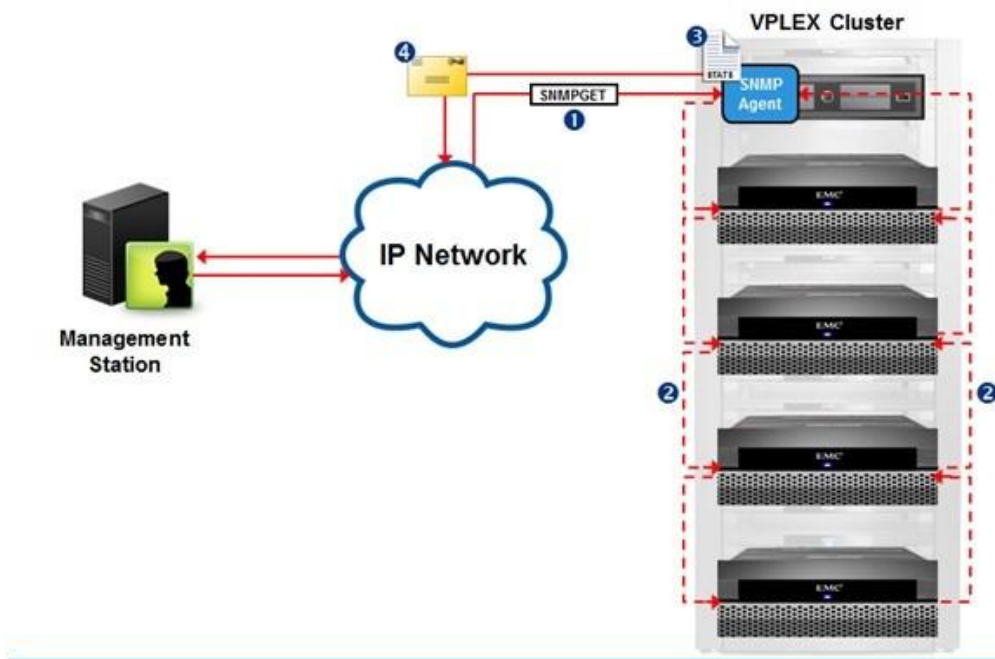


The customer deleted ext\_2 on a 20 GB LUN in order to make an extent of 10 GB. Why is the customer unable to create a 10 GB extent?

- A. Chunks of the storage need to be contiguous.
- B. Storage array must be re-discovered.
- C. ext\_2 cannot be deleted.
- D. The defrag property is set to false.

**Answer:** A

**QUESTION:** 202  
Refer to the exhibit.



Reference the message type shown at point "1". What type of response will be sent back to the SNMP management server from the SNMP Agent?

- A. A poll response containing requested data
- B. A trap response containing requested data
- C. A poll response that initiates a trap response
- D. A trap response containing all MIB data

**Answer:** A

**QUESTION:** 203  
Refer to the exhibit.

```
VPlexcli:/clusters/cluster-2> vault status

=====
Cluster level summary
=====
Cluster:/clusters/cluster-2
Cluster is not vaulting/unvaulting
```

During a short power disruption to cluster 2, director-2-1-A failed. Power was restored after 5 minutes. In examining the output of the vault status command, you

note that cluster-2's status reads "Cluster is not vaulting/unvaulting". Why did this message appear?

- A. The power disruption affected a single director only.
- B. There was no power disruption at cluster-1
- C. The power disruption did not affect all "A" directors.
- D. The vaulting process runs on cluster-1

**Answer:** A

**QUESTION:** 204

Refer to the exhibit.

```
VPlexcli:/clusters/cluster-1> vault status

=====
Cluster level summary
=====
Cluster:/clusters/cluster-1
Cluster is not vaulting/unvaulting

=====
Director level summary
=====
/engines/engine-1-1/directors/director-1-1-B:
    state: Vault Inactive
/engines/engine-1-1/directors/director-1-1-A:
    state: Vault Inactive
/engines/engine-1-2/directors/director-1-2-B:
    state: Vault Inactive
/engines/engine-1-2/directors/director-1-2-A:
    state: Vault Inactive
```

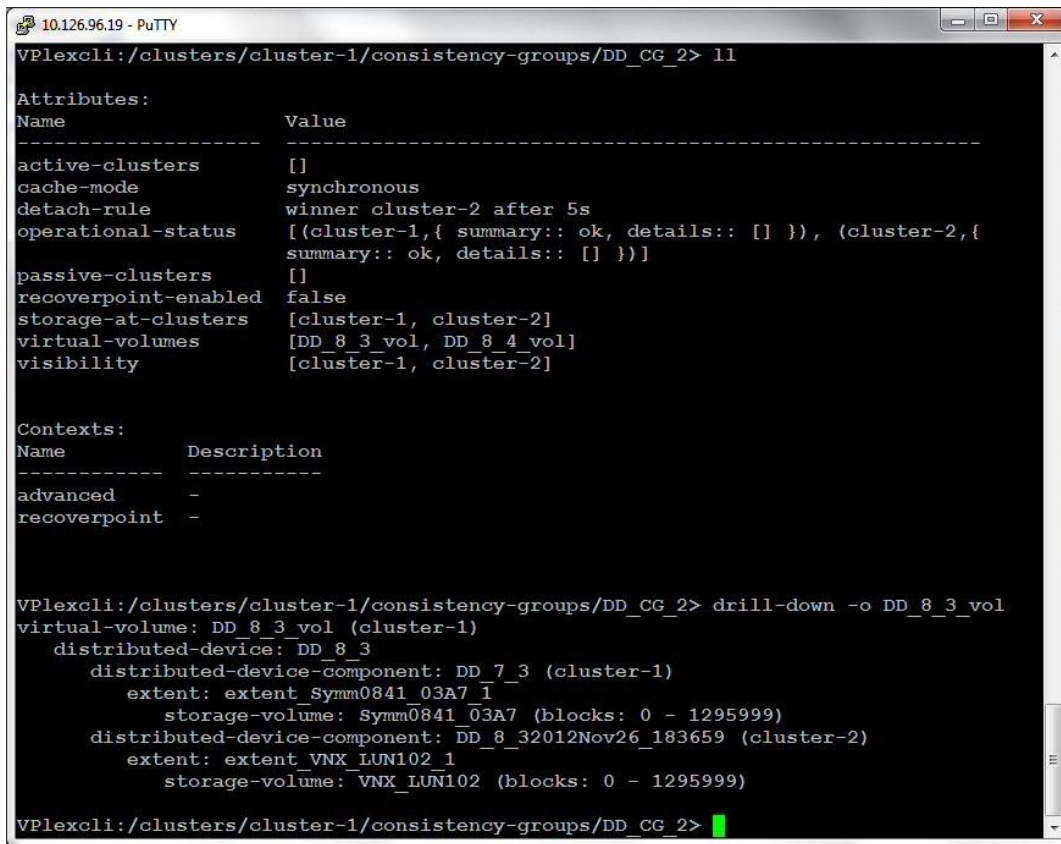
After a power disruption of 20 seconds in a VPLEX environment, the output of the "vault status" command shows no vaulting processes. Why did this occur?

- A. The cache vaulting did not exceed the timer period.
- B. It is the expected output, because the command "vault status" doesn't show information on cache process at all.
- C. Cache vaulting process has already completed.
- D. Cache vaulting process is still running in background and it is not shown until completed.

**Answer:** A

**QUESTION:** 205

Refer to the exhibit.



```
10.126.96.19 - PuTTY
Vplexcli:/clusters/cluster-1/consistency-groups/DD_CG_2> ll

Attributes:
Name                               Value
-----
active-clusters                     []
cache-mode                         synchronous
detach-rule                         winner cluster-2 after 5s
operational-status                  [(cluster-1,{ summary:: ok, details:: [] }),(cluster-2,{
summary:: ok, details:: [] })]
passive-clusters                    []
recoverpoint-enabled                false
storage-at-clusters                 [cluster-1, cluster-2]
virtual-volumes                     [DD_8_3_vol, DD_8_4_vol]
visibility                          [cluster-1, cluster-2]

Contexts:
Name                               Description
-----
advanced                           -
recoverpoint                        -

Vplexcli:/clusters/cluster-1/consistency-groups/DD_CG_2> drill-down -o DD_8_3_vol
virtual-volume: DD_8_3_vol (cluster-1)
  distributed-device: DD_8_3
    distributed-device-component: DD_7_3 (cluster-1)
      extent: extent_Symm0841_03A7_1
        storage-volume: Symm0841_03A7 (blocks: 0 - 1295999)
    distributed-device-component: DD_8_32012Nov26_183659 (cluster-2)
      extent: extent_VNX_IUN102_1
        storage-volume: VNX_IUN102 (blocks: 0 - 1295999)

Vplexcli:/clusters/cluster-1/consistency-groups/DD_CG_2>
```

You have created a Distributed Device in a VPLEX Metro. You want to confirm you have chosen the correct volumes before performing a device mobility job within cluster-2. Which object will be the source for this operation?

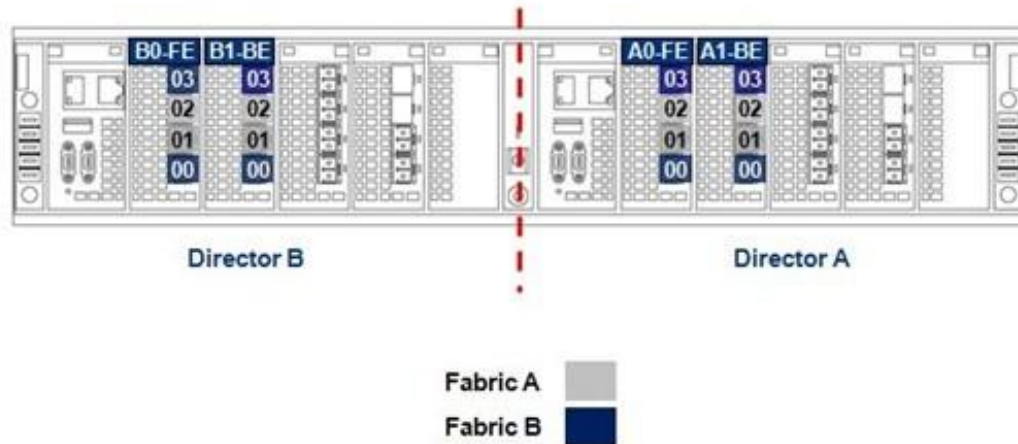
- A. DD\_8\_32012Nov26\_183659
- B. extent\_Symm0841\_03A7\_1
- C. Symm0841\_03A7
- D. DD\_7\_3

**Answer:** A

**QUESTION:** 206

Refer to the exhibit.





The customer has not followed EMC best practices when cabling their VS2 VPLEX engine. What action would you recommend to fix this issue?

- A. Swap ports 00 with ports 01 of both director A and director B.
- B. Swap port 02 with port 03 of both director A and director B.
- C. Add two more additional fabrics and place each director in its own fabric.
- D. Separate all FE and BE ports into their own fabric.

**Answer:** A

**QUESTION:** 207

How many management Ethernet connections exist between the management server and the engines?

- A. 2
- B. 4
- C. 6
- D. 8

**Answer:** A

**QUESTION:** 208

What is an EMC best practice for fault tolerance when zoning a VPLEX Metro together over Fibre Channel for successful communication between the sites?

- A. Zone each WAN-COM port to all WAN-COM ports in the other fabric.
- B. Zone all WAN-COM ports to each other in both SAN fabrics within a single zone.
- C. Zone each WAN-COM port to all WAN-COM ports in the other fabric. Zone one Local-COM port to all WAN-COM ports in the other fabric for VPLEX Witness.
- D. Zone all WAN-COM ports to each other in both SAN fabrics within a single zone. Zone one Local-COM port to all WAN-COM ports in the other fabric for VPLEX Witness.

**Answer:** A

**QUESTION:** 209

When should front-end ports be enabled during a VPLEX installation?

- A. After creating the meta-volumes and backup
- B. Before creating the meta-volumes and backup
- C. Before launching the VPLEX EZ-Setup Wizard
- D. After exposing storage to the hosts

**Answer:** A

**QUESTION:** 210

An EMC customer wants to add a mirror to a VPLEX Local RAID 0 device. Which RAID type is created after the device attach-mirror command is issued?

- A. RAID 1
- B. RAID 0
- C. RAID S
- D. RAID C

**Answer:** A





# SAMPLE QUESTIONS

*These questions are for demo purpose only. **Full version** is up to date and contains actual questions and answers.*

*Killexams.com is an online platform that offers a wide range of services related to certification exam preparation. The platform provides actual questions, exam dumps, and practice tests to help individuals prepare for various certification exams with confidence. Here are some key features and services offered by Killexams.com:*

**Actual Exam Questions:** *Killexams.com provides actual exam questions that are experienced in test centers. These questions are updated regularly to ensure they are up-to-date and relevant to the latest exam syllabus. By studying these actual questions, candidates can familiarize themselves with the content and format of the real exam.*

**Exam Dumps:** *Killexams.com offers exam dumps in PDF format. These dumps contain a comprehensive collection of questions and answers that cover the exam topics. By using these dumps, candidates can enhance their knowledge and improve their chances of success in the certification exam.*

**Practice Tests:** *Killexams.com provides practice tests through their desktop VCE exam simulator and online test engine. These practice tests simulate the real exam environment and help candidates assess their readiness for the actual exam. The practice tests cover a wide range of questions and enable candidates to identify their strengths and weaknesses.*

**Guaranteed Success:** *Killexams.com offers a success guarantee with their exam dumps. They claim that by using their materials, candidates will pass their exams on the first attempt or they will refund the purchase price. This guarantee provides assurance and confidence to individuals preparing for certification exams.*

**Updated Content:** *Killexams.com regularly updates its question bank and exam dumps to ensure that they are current and reflect the latest changes in the exam syllabus. This helps candidates stay up-to-date with the exam content and increases their chances of success.*

**Technical Support:** *Killexams.com provides free 24x7 technical support to assist candidates with any queries or issues they may encounter while using their services. Their certified experts are available to provide guidance and help candidates throughout their exam preparation journey.*

For More exams visit <https://killexams.com/vendors-exam-list>  
Kill your exam at First Attempt....Guaranteed!